

# 600-700 De La Gauchetière

**Madeleine Nicholls**  
VICE PRESIDENT, RETAIL

[mnicholls@dream.ca](mailto:mnicholls@dream.ca) | 416.365.2351

## Iconic Buildings

Location in downtown Montréal's vibrant Quartier International de Montréal with a direct connection to the Metro/subway, steps to Central Train Station and with great shopping, restaurants and lounges, cafés and convenient services in the area, 700 De La Gauchetière provides businesses and tenants with an excellent work environment.

**MONTREAL**  
**600-700 De La Gauchetière**

**Overview**

- ✓ Downtown iconic buildings
- ✓ Direct connection to subway
- ✓ Vibrant food court & service amenities

**Details**

ADDITIONAL RENT	<b>\$63.30/ SF (est.)</b>
BUILDING SIZE	<b>TBD</b>
YEAR BUILT	<b>1983</b>
RETAIL OPPORTUNITIES	<b>Ste C-21.2 665 SF</b>
	<b>Lobby Ground Floor 3,000 SF</b>
	<b>Sub-Concourse 50,000 SF</b>

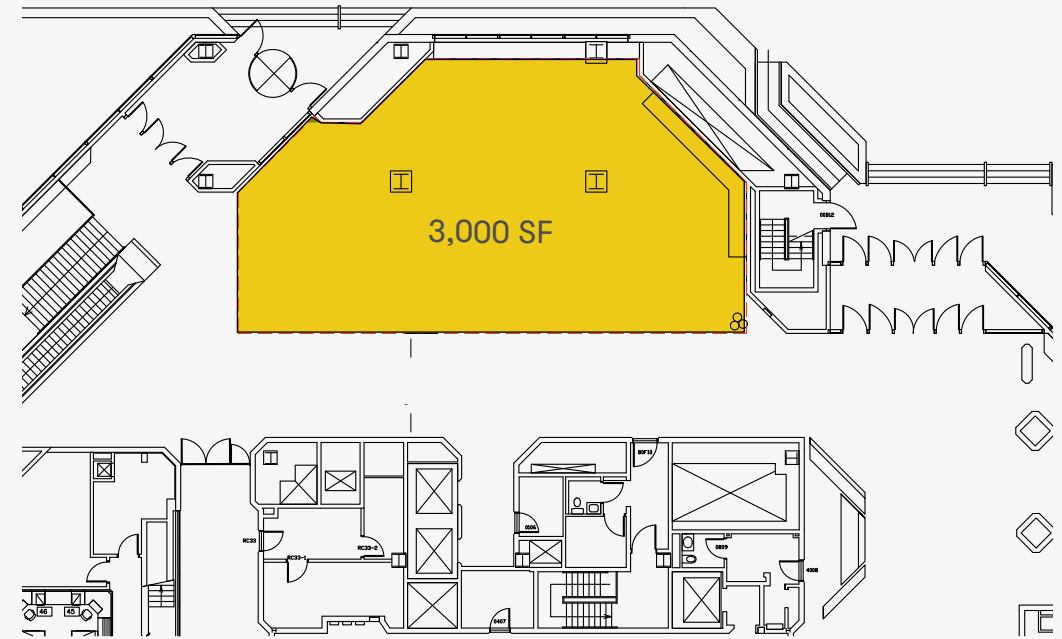


RUE DE LA GAUCHETIÈRE O & BOULEVARD ROBERT-BOURASSA



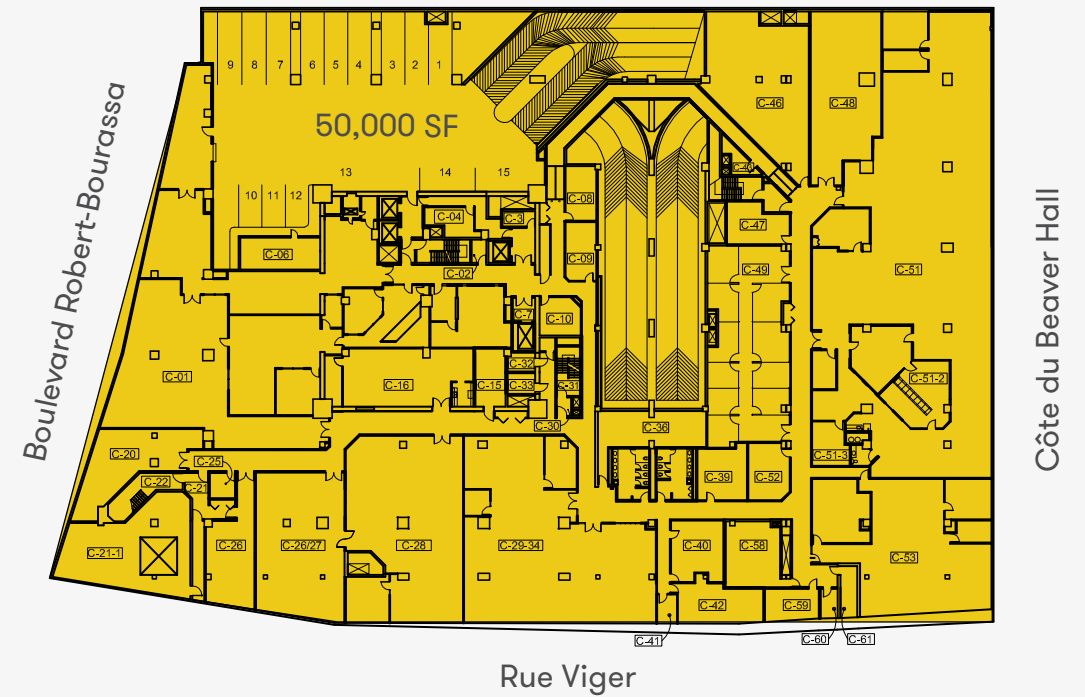
Site

**LOBBY GROUND FLOOR**



**SUB-CONCOURSE**

Rue De La Gauchetière O



Available