

# Edmonton Highfield Place

ABOUT THIS PROPERTY

10010 106 STREET NW

## Property Summary

Well-located within the city's government district at the corner of 106th Street and 100th Avenue, Highfield Place is close to all major downtown attractions and transit routes. The building features a mix of offices and open work spaces, with a reception area and private washroom. There are large windows fronting 106th Street with a rare main floor retail opportunity.

## Property Details

Additional Rent:	\$16.96 / SF (est.)
Year Built:	1978
Total SF:	107,621 SF
No. of Floors:	10
Typical Floor Plate:	11,143 SF

## Retail Opportunities

Suite 100 - 5,773 SF
Suite 103 - 1,162 SF



### Property Contact

**Madeleine Nicholls**

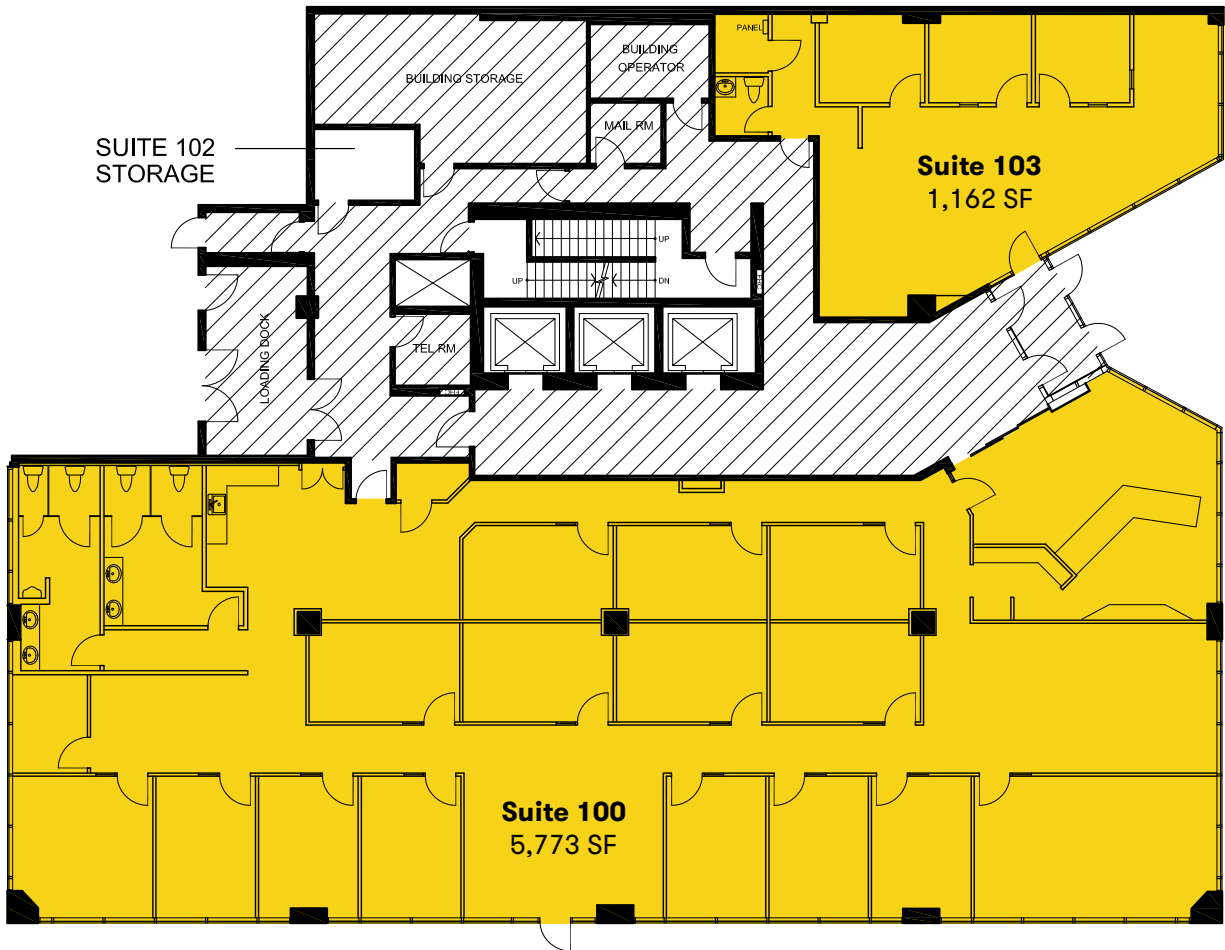
VP, Retail Leasing

[mnicholls@dream.ca](mailto:mnicholls@dream.ca)

416.365.2351

# Edmonton Highfield Place

## FLOOR PLANS



● Available

### Map

Intersection:

106 Street NW / 100 Avenue NW

